



WWF INSIDER JOURNEYS

# KENYA RHINO & ELEPHANT CONSERVATION SAFARI



## TRIP ITINERARY

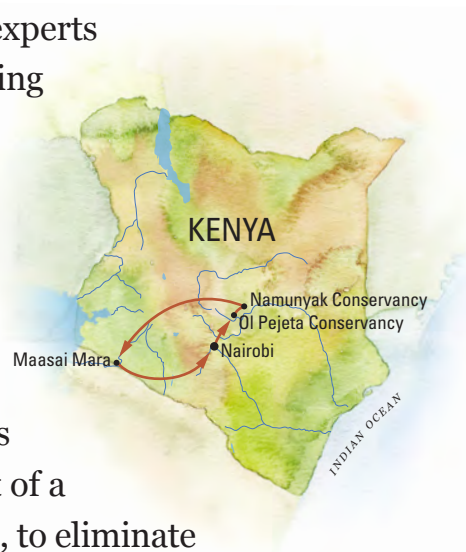
A Safari with Nikhil Advani, Senior Director,  
Wildlife and Climate Resilience

May 24–June 4, 2026



**T**he amazing rhinoceros and elephants are the highlight of this special safari, though you'll also meet plenty of other charismatic African wildlife, too.

Enjoy exclusive, behind-the-scenes talks with WWF local experts and partners on the front lines of conservation in three leading private conservancies, learn about struggles and successes with rhino restoration, and relish encounters walks from our secluded private camps. Visit Ol Pejeta Conservancy, home to the largest population of black rhinos in East and Central Africa, and one of the places where WWF and partners are using thermal camera technology that helps rangers detect and prevent poaching that typically happens under the cover of darkness at night. These efforts are part of a larger project between WWF and FLIR, called Kifaru Rising, to eliminate



poaching and improve ranger safety in 11 of Kenya's highest-priority wildlife reserves that hold over 80% of Kenya's rhinos and are home to African elephants and other threatened species.

With their sharp, swooping horns, large nostrils, whimsical ears and wrinkled, armor-like hides, Africa's rhinos look both ferocious and charming. The world's largest

land mammal after elephants, rhinos can weigh more than two tons. They are among the oldest mammals on Earth, roaming the continent for millions of years. Yet this mighty, enduring beast is threatened with extinction as poaching has decimated its numbers. But hope glimmers, as concerted conservation efforts are helping rhinos step back from the brink.

## ITINERARY AT A GLANCE 12 Days

Day	Date	Location	Accommodation
1	May 24	Nairobi, Kenya	House of Waine
2	May 25	Nairobi National Park / Sheldrick Wildlife Trust / Giraffe Center	House of Waine
3 - 5	May 26 - 28	Ol Pejeta Conservancy	Nat Hab's Rhino Camp
6 - 8	May 29 - 31	Namunyak Conservancy / Reteti Elephant Sanctuary	Nat Hab's Elephant Conservation Camp
9 - 11	June 1 - 3	Maasai Mara—Olderkesi Conservancy	Nat Hab's Mara East Camp
12	June 4	Nairobi/ Depart	

## ITINERARY IN DETAIL

### Day 1, May 24: Nairobi, Kenya

Our Kenya safari begins in Nairobi, with a transfer from the airport to our boutique hotel in the quiet residential suburb of Karen on the outskirts of the city. This area at the foot of the Ngong Hills is named for Danish author Karen Blixen, also known by her pen name Isak Dinesen, who wrote the famous memoir *Out of Africa* chronicling her life on a Kenyan coffee plantation in the early 20th century. This evening, enjoy a welcome dinner with our WWF Experts and Expedition Leader to preview our safari adventures ahead.

*Overnight: House of Waine (D)*



### Day 2, May 25: Nairobi National Park / Sheldrick Wildlife Trust / Giraffe Center

After breakfast, meet your guide and head out for your first wildlife experience, a morning game drive in nearby Nairobi National Park. Designated as a protected reserve by the British colonial government in 1946, this 45-square-mile park on the outskirts of the city is home to black rhino, lion, leopard, cheetah, hyena, buffalo, giraffe and diverse birdlife, with more than 400 species recorded. Here, we'll have our first rhino encounter and introduction to this very special endangered species.



After our safari and a picnic lunch in the park, continue to the Sheldrick Wildlife Trust, which operates the most successful elephant rescue and rehabilitation program in the world. The trust's pioneering programs for orphaned elephants—rhinos, too—are a leading inspiration for conservation work in East Africa, with numerous wildlife and habitat protection successes to tout. On a private visit to the Daphne Sheldrick Elephant Orphanage, learn

about its history and mission, how the baby elephants here were rescued, and how they're cared for until they can be released back into the wild. We'll meet their keepers, watch a feeding, and likely observe some mud bath play as well.

Then it's on to Nairobi's famous Giraffe Center, established in 1983 to protect the endangered Rothschild's giraffe found only on the grasslands of East Africa. The Giraffe Center





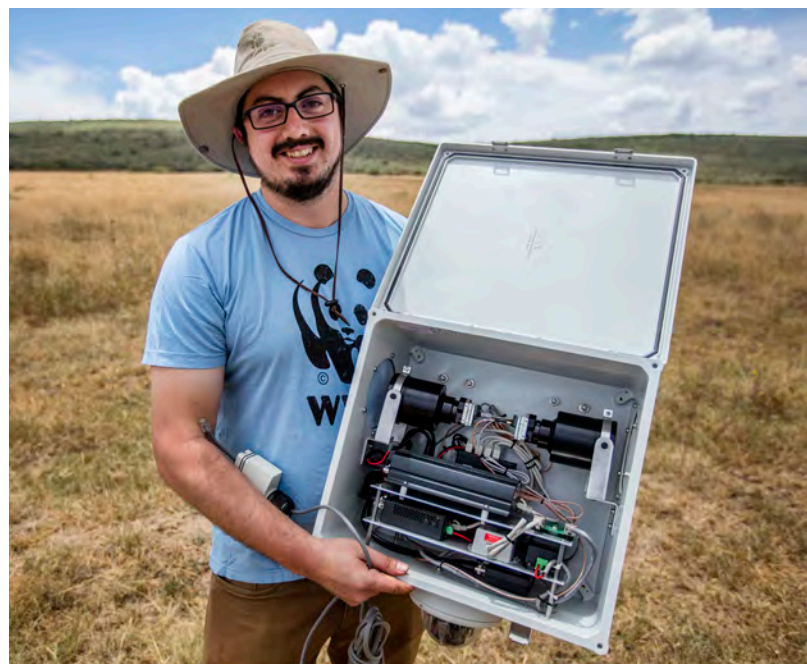
is the creation of the African Fund for Endangered Wildlife, a Kenyan non-profit whose main purpose is to provide educational programs for Kenyan youth about the country's wildlife and environment, and to offer visitors a chance to come into contact with the world's tallest species, the giraffe. The center has introduced several breeding pairs of Rothschild's giraffe into Kenyan national parks. You'll stand up high on platforms to engage eye-to-eye with these gentle giants, and a chance to feed them by hand is lots of fun.

*Overnight: House of Waine (B, L, D)*

## Days 3 - 5, May 26 – 28: Ol Pejeta Conservancy—Nat Hab's Rhino Camp

Fly north to the renowned Ol Pejeta Conservancy, located on the Laikipia Plateau. A working cattle ranch established in the 1940s during Kenya's colonial days, Ol Pejeta set aside land for rhino conservation in 1988 and has become a highly regarded trailblazer for conservation innovation.

One of the first sites for Kifaru Rising (in Kiswahili, Kifaru means 'rhino'), a project designed by WWF and FLIR to eliminate poaching and improve ranger safety in high-priority reserves in Kenya, you'll see firsthand how Ol Pejeta is using infrared cameras to help rhino populations—and other wildlife thrive and learn how they're sharing their knowledge with other parks, including the neighboring Solio Game Reserve. Today, Ol Pejeta Conservancy is the largest black rhino sanctuary in East Africa and home to the world's last two



To register or if you have questions, please contact Aly Jacobsen at Natural Habitat Adventures (888) 993-8687 or [alyj@nathab.com](mailto:alyj@nathab.com).



remaining northern white rhinos, a staunchly guarded pair of females that we visit in person, learning about their fate and future with a local conservation expert. The conservancy is also home to the endangered Grevy's zebra and has some of Kenya's highest predator densities, yet it still manages a very successful livestock program. Ol Pejeta seeks to preserve the exceptional biodiversity within its 90,000 acres while supporting the people living on its borders, to ensure that wildlife conservation translates to better education, healthcare, and infrastructure for the next generation of wildlife guardians. In 2014, Ol Pejeta achieved IUCN Green List status, one of only two conservancies in Africa to be so recognized. The Green List aims to define excellence in managing valuable natural areas.



Nat Hab's Rhino Camp inside the conservancy is the ideal base from which to explore this diverse wildlife haven that contains many of Kenya's endemic northern species. We'll hope to see the legendary Big Five (lion, leopard, rhinoceros, elephant, and Cape buffalo) and much more on day and night wildlife drives and guided walks against the backdrop of snowcapped Mount Kenya. At the end of each exhilarating foray into the bush, return to the comforts of our tented camp,

redolent with the ambience of East Africa's classic safari era.

*Overnight: Nat Hab's Rhino Camp (B, L, D)*

## Days 6 - 8, May 29 – 31: Namunyak Conservancy—Nat Hab's Elephant Conservation Camp / Reteti Elephant Sanctuary

A short chartered flight takes us to the Namunyak Community Conservancy in the heart of Kenya's northern frontier. Backdropped by the dramatic Mathews Range, this land is home to the Samburu people, semi-nomadic pastoralists who have raised livestock here for centuries while coexisting in harmony with the region's striking wildlife. Namunyak is one of Kenya's most pristine wilderness areas, serving as a critical refuge for many wildlife species, with important northern populations of reticulated giraffe, gerenuk, leopard, African wild dog, impala lion, greater kudu and many different birds. The conservancy is particularly important for elephants







as they move seasonally between the Mathews Range and the Ngare Ndare Forest near Mount Kenya, a route they have used for decades.



Our base for exploration is Nat Hab's Elephant Conservation Camp, where seclusion, comfort and exceptional service are hallmarks of this exclusive experience. Our stay includes a private visit to Reteti Elephant Sanctuary, the world's first such enterprise owned by Indigenous community members. The sanctuary was designed to rescue and release orphaned and abandoned elephant calves while creating much-needed benefits for the local people that live alongside them—inspiring them to recognize the intrinsic value of nature and protecting local wildlife for its benefit to their own well-being.

We have the rare opportunity to go behind the scenes to meet the dedicated local caretakers and to witness firsthand how Reteti is transforming elephant conservation. Observe feeding time, learn the

elephants' individual stories, and support a model of conservation that uplifts both wildlife and the surrounding Samburu community. We'll also take game drives and guided bush walks to look for roaming elephants and other wildlife, punctuated with peaceful interludes at camp. The entire experience offers a soulful connection to northern Kenya's people, animals and landscapes—one that few travelers are privileged to encounter, and one that will certainly ignite your own passion for conservation.

*Overnight: Nat Hab's Elephant Conservation Camp (B, L, D)*



To register or if you have questions, please contact Aly Jacobsen at Natural Habitat Adventures (888) 993-8687 or [alyj@nathab.com](mailto:alyj@nathab.com).



## Days 9 - 11, June 1 – 3 : Maasai Mara— Olderkesi Conservancy, Nat Hab's Mara East Camp

Transfer this morning to the Lewa Airstrip for our flight to Kenya's famed Maasai Mara. Our first safari destination in the Mara is a vast private conservancy offering unparalleled access to wildlife viewing. Nat Hab's own mobile camp on the Olderkesi Conservancy features bush luxury in classic canvas tents, surrounded by all the natural wonders of the Maasai Mara ecosystem without the crowds. The conservancy model has been a boon to the region's legendary wildlife, creating buffer zones and protecting migration corridors while providing economic benefits to local landowners through responsible safari tourism.



On this private reserve, learn about conservation successes as we experience the Mara's spectacular wildlife in peaceful solitude—with strict limits on guest numbers, our camp is one of just a handful located within its bounds, allowing for unprecedented wildlife viewing of the multitude of species that resides on the conservancy. Great herds of antelope dot the grassy, rolling plains while stands of acacia woodland shelter prolific birdlife. Rich volcanic soils nurture a verdant landscape where we find more lions per square mile than anywhere else in Kenya. Impressive herds of elephants, giraffes, and zebras also roam the savanna.



Our activities make the most of our unrivaled access to this vast, wild region. In addition to daily game drives, enjoy guided walks, bush picnics, off-road safaris, and night drives in search of nocturnal wildlife—pursuits not permitted in the adjacent Maasai Mara National Reserve.

*Overnight: Nat Hab's Mara East Camp (B, L, D)*

## Day 12, June 4: Nairobi / Depart

After a rich range of safari experiences, and inspired by the conservation triumphs Kenya has achieved for endangered rhinos and other wildlife, it's time to fly back to Nairobi today. On arrival, day rooms await for refreshment and relaxation. Later, we'll share a farewell meal to close our Kenya conservation safari before meeting evening departures for international destinations.

*Please note: The itinerary provided is meant as a guideline and is subject to change without notice. On rare occasions, it may be necessary to deviate from our regular itinerary for reasons beyond our control. In these instances, we will provide the best available alternative.*





# Meet Our Expert



## Nikhil Advani, Senior Director, Wildlife and Climate Resilience

Dr. Nikhil Advani was born and grew up in Kenya. He has his bachelor's degree and Ph.D. in ecology, evolution and behavior from The University of Texas at Austin. Nikhil's role at WWF is at the intersection of wildlife, rural communities, and climate change. Projects under his portfolio focus on better understanding how wildlife and rural communities are being affected by changes in weather and climate, and developing and implementing solutions to help them adapt. These include an initiative

to gather data and implement climate adaptation projects for rural communities (WWF Climate Crowd), a Wildlife and Climate assessment series to research species vulnerability to climate change, and the creation of a Wildlife Adaptation Innovation Fund to help at-risk species adapt to climate change. The research and pilot projects are then used to scale the work in priority landscapes globally, including in Africa, Asia, Latin America, and other geographies. Nikhil is also leading a GEF project focused on nature-based tourism in eastern and southern Africa, which seeks to connect funders to communities most affected by the global pandemic (African Nature-Based Tourism Platform).

## What to Expect and Physical Requirements

To participate in this trip, you must be able to walk unassisted at a steady pace for at least one mile over uneven terrain, climb steps to get into and out of our raised safari vehicles, and be able to tolerate daily outdoor excursions that may last 4-5 hours or even a full day at a time, sometimes in hot, windy, and/or dusty conditions. Wildlife drives pose a particular type of physical demand on the body, as they require long hours of sitting and take place over terrain that is often very rough and bumpy, including dirt roads with many ruts and potholes. Travelers with back or neck problems, or other health issues that could be exacerbated by such conditions, should take this into consideration. While any walking safaris are considered optional, travelers must be able to walk unassisted to and from the vehicle to our camp accommodations, sometimes walking over uneven ground or on boardwalks. Days spent on safari are often long, as mornings typically start before daybreak and evening meals are served after sundown. Safari accommodations and vehicles are not climate-controlled and, depending on the season, temperatures can range from quite cold to extremely hot, so it is critical that travelers come prepared.



# Accommodations



## The House of Waine

The House of Waine, located in the quiet residential suburb of Karen on the outskirts of Nairobi, offers an appealing alternative to standardized city hotels. Set on 2.5 beautiful acres, it was originally built as a lavish private estate. Later acquired by a local family, the elegant property was carefully refurbished, resulting in the distinctive boutique hotel that exists today. The stately home offers guests an authentic experience of personalized African hospitality with uniquely designed rooms, modern amenities and traditional Kenyan charm. The inn's 11 bedrooms are individually styled and named, each furnished to reflect a distinct theme.



## Nat Hab's Rhino Camp

Nat Hab's private Rhino Camp offers exclusive access for viewing endangered rhinos and other rare wildlife on the renowned Ol Pejeta Conservancy. Because our camp is mobile, we're able to situate ourselves in secluded areas on the 90,000-acre reserve where wildlife viewing is best. Located on the Laikipia Plateau, this working cattle ranch established in the 1940s set land aside in 1988 to protect rhinos and has since become a global conservation leader. Today it is the largest black rhino sanctuary in East Africa and home to the world's last two remaining northern white rhinos, as well as endangered Grevy's zebra and some of Kenya's highest predator densities.



## Nat Hab's Elephant Conservation Camp

In the remote expanse of northern Kenya's Namunyak Wildlife Conservancy, where dry forest gives way to mountain ridgelines and acacia-dotted plains, this luxury safari camp sits on land co-managed with the Samburu people. The conservancy's wildlife corridors remain active and intact. Elephants pass through, antelope graze within view





and birds call out from the canopy. A network of footpaths connects guest tents and the camp's central dining area and lounge.

Guest tents are oriented to maximize light and landscape. Each features a veranda with a table and chairs, king-size beds under mosquito nets and hand-built furniture crafted by local artisans. En suite bathrooms offer hot water, flush toilets and double vanities. In-room charging stations, daily housekeeping and complimentary laundry are standard.

## Nat Hab's Mara East Camp

Our luxury mobile tented camp is the perfect base for wilderness family adventures. Situated in a remote location on a private conservancy in the Maasai Mara adjacent to the national reserve, it offers outstanding proximity to prime wildlife viewing without the crowds. Each tent has a shaded veranda with table and comfortable chairs. Inside the heavy-duty canvas walls, you'll find shelves, luggage racks, and hanging caddies for your personal items. At night, sink into cotton linens, duvets, and blankets to ward off the chill, with the added comfort of a hot water bottle provided each evening. En suite bathrooms have flush toilet, sink, warm water dispenser, and safari-style hot showers. Solar-powered lighting is available around the clock in each tent, with charging facilities for all your electronic needs in the main lounge. After sunset, camp paths are illuminated by kerosene lanterns. Fine meals are served in the dining tent or outdoors under the shade of an acacia tree.



# About WWF Insider Journeys

WWF Insider Journeys is a special conservation travel program for our closest supporters to see first-hand the positive impact World Wildlife Fund is making. Each of these curated journeys is accompanied by WWF experts and offers exclusive opportunities to discover the wildlife and ecosystems we protect; meet community members whose lives are being improved because of our work; and immerse yourself in the worlds of our staff and partners on the ground. Come explore the best of the natural world alongside other WWF supporters and see how together we are making a difference for our planet.

## About Our Travel Partner



This journey is being arranged by Natural Habitat Adventures of Boulder, Colorado. For more than a decade, WWF has partnered with Nat Hab to take travelers to view nature's greatest sights. WWF selected Natural Habitat as its partner because of its longstanding commitment to conservation and the exceptional quality of its adventures.

## Reservation Information & Trip Details

To register or if you have questions, please contact Aly Jacobsen at Natural Habitat Adventures (888) 993-8687 or [alyj@nathab.com](mailto:alyj@nathab.com).

<b>DATES:</b>	May 24 – June 4, 2026
<b>GROUP SIZE:</b>	Limited to 10 guests
<b>LAND COST:</b>	\$19,995 (+internal air) per person in double occupancy Internal air cost: \$2,284 Single supplement: \$1,995
<b>DEPOSIT:</b>	\$500 per person (nonrefundable)

**INCLUDED:** Accommodations, services of Nat Hab's professional Expedition Leader(s), local guides and camp staff all meals from dinner on Day 1 through lunch on final day, some gratuities, airport transfers on Day 1 and final day, all activities and entrance fees, all taxes, permits and service fees. All light aircraft flights within the itinerary (this will be listed separately on our invoicing)

**NOT INCLUDED:** Travel to and from the start and end point of your trip, some alcoholic beverages, some gratuities, passport and visa fees (if any), optional activities, items of a personal nature (phone calls, laundry and internet, etc.), airline baggage fees, airport and departure taxes (if any), required medical evacuation insurance, optional travel protection insurance.



**PAYMENTS:** A nonrefundable deposit of \$500 confirms your space. Payments are accepted by credit card or by check made out to Natural Habitat Adventures.

**CANCELLATIONS & REFUNDS:** Cancellations must be received in writing at NHA by US mail, email or fax. At the time WWF receives your written cancellation, the following per person penalties apply: 120 days or more before departure: lose deposit. 120 to 61 days before departure: forfeit 50% of tour cost. 61 before departure: no refund: forfeit 50% of tour cost. 60 days or fewer before departure: no refund.

**INSURANCE:** Since the areas we travel to on this trip are remote and wild (that's why we go there!), we require medical evacuation insurance for our guests' safety. If you decline the medical evacuation insurance coverage offered by Natural Habitat Adventures, we request that you send us documentation of the independent coverage you have selected. We will add the cost of a medical evacuation policy to your tour invoice until you provide our office with proof of coverage including your insurance company's name, contact number and your individual policy number. Thank you for understanding that our policy exists exclusively in the interest of our guests' safety.

#### **GETTING THERE & GETTING HOME:**

Please plan to arrive in Nairobi, Kenya by 5 pm on Day 1 in order to attend a 7 pm welcome dinner. You are free to depart Nairobi after 6 pm on the final day.

We can best serve you if our Natural Habitat Adventures' Travel Desk makes your reservations, since we are intimately familiar with the special requirements of this program and can arrange the most efficient travel. Please call us at 800-543-8917. While we offer you the best possible rates available to us on airfare and additional nights' accommodations, you may find special web rates or better fares online.

*While WWF Insider Journeys are intended for WWF's closest supporters and enhanced with WWF Experts, exclusive site visits, and enriched content, a minimum number of guests is required to run each trip. To avoid canceling, WWF and Nat Hab may fill remaining available spots with WWF and non-WWF members.*