

## GEF-7 Project Fact Sheet

### PROJECT OVERVIEW

<b>Project Title</b>	Promoting Dryland Sustainable Landscapes and Biodiversity Conservation in the Eastern Steppe of Mongolia (SES – Sustainable Eastern Steppe)
<b>Project Objective</b>	To reverse and prevent dryland ecosystem degradation and biodiversity loss through an inclusive, integrated landscape and value chain approach securing multiple environment benefits and sustainable, resilient livelihoods in the Eastern Steppe of Mongolia.
<b>Donor</b>	Global Environment Facility (GEF)
<b>Total GEF funding</b>	USD 6 million
<b>Total Co-financing</b>	USD 42 million
<b>GEF Agencies</b>	Food and Agriculture Organization of the United Nations (FAO); and World Wildlife Fund, Inc. (WWF-US)
<b>Lead Executing Agency</b>	Ministry of Environment and Tourism (MOET)
<b>Other Key Partners</b>	Ministry of Food, Agriculture and Light Industry (MOFALI), Ministry of Construction and Urban Planning (MOCUP), Aimag and Soum Governments, and WWF Mongolia
<b>Project Duration</b>	5 years (2020-2025)

### BACKGROUND

The project, for which the detailed project document is currently being prepared, is part of a global program led by FAO, the GEF-7 Sustainable Forest Management Impact Program on Dryland Sustainable Landscapes. The project will support the transformation of Mongolia's Eastern Steppe ecosystems to a resilient landscape that enhances biodiversity conservation and sustainable utilization, restores soil fertility, and reduces greenhouse gas (GHG) emissions.

The project will be divided into four components, as follows.

- 1) Component 1: Strengthening the enabling environment for the sustainable management of drylands in Mongolia.
- 2) Component 2: Scaling up sustainable dryland management in the Eastern Steppe of Mongolia.
- 3) Component 3: Strengthening biodiversity conservation and landscape connectivity.
- 4) Component 4: Project coordination, knowledge management and monitoring and evaluation.



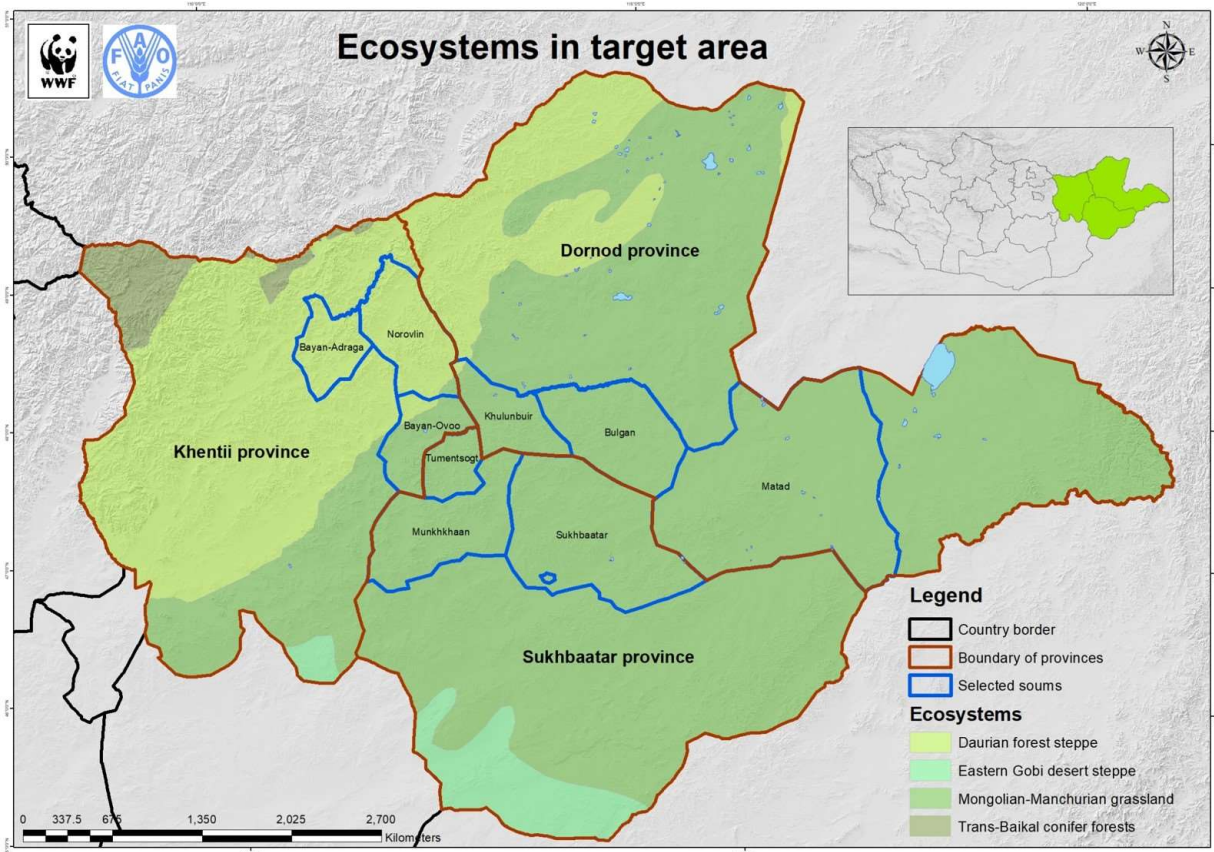
The project draws upon targets relevant to Mongolia's commitments to Land Degradation Neutrality (LDN), the Rio Conventions, and the GEF focal areas of Biodiversity and Land Degradation. It will build on lessons learned and collaborate closely with ongoing and planned initiatives by organizations such as the World Bank, the International Fund for Agricultural Development (IFAD), the United Nations Development Programme (UNDP), and the Swiss Agency for Development and Cooperation (SDC).

### PROJECT LOCATION

The project interventions will take place in nine counties (*soums*) of the three eastern provinces (*aimags*) of Dornod, Khentii and Sukhbaatar, as shown in the map below. In addition, the project will include national and provincial level activities.

The target area covers a total **6.86 million ha dryland** within the Eastern Mongolian Steppe, composed of:

- 5.96 million hectares Mongolia-Manchurian Grassland Ecoregion, and;
- 897,748 hectares Daurian Forest Steppe Ecoregion.



**Contact Information**

FAO Mongolia [FAO-MN@fao.org](mailto:FAO-MN@fao.org)

WWF Mongolia [info@wwf.mn](mailto:info@wwf.mn)