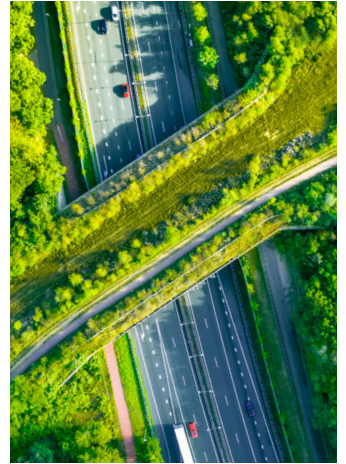
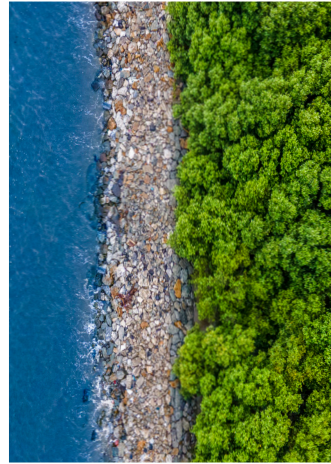


# GEF-8 Greening Transportation Infrastructure Development Integrated Program



## CONTEXT

Transportation infrastructure—including roads, rail, waterways, and ports—plays a critical role in connecting people to goods and services and supporting economic growth. Yet, it is also a top driver of habitat loss and fragmentation worldwide, opening access for illegal logging and hunting, disrupting wildlife migration pathways, and degrading biodiversity and ecosystem services, including carbon sequestration and resilience.

To protect biodiversity, reduce greenhouse gas emissions, adapt to climate change, and adequately address the growing global demand for transportation infrastructure, conventional infrastructure planning must be replaced with a process where biodiversity and ecosystem services are recognized, valued, and protected. This transformation will require multisectoral, crossinstitutional, transparent, and integrated approaches.

## ABOUT

In February 2024, the [Global Environment Facility](#) (GEF) approved nearly \$27 million in funding for the five-year Greening Transportation Infrastructure Development (GRID) Integrated Program to mainstream biodiversity and ecosystem considerations into transportation

infrastructure planning and design. Country partners in Malaysia, Nepal, the Philippines, Suriname, and Ukraine will deliver **national projects**, with support from World Wildlife Fund (WWF), the Asian Development Bank (ADB), and the United Nations Environment Programme (UNEP). National-level interventions will focus on:

- Improving the policy enabling environment
- Strengthening integrated and participatory planning and design
- Promoting innovative financing and de-risking mechanisms
- Building technical capacity for nature-positive infrastructure planning and development

WWF will serve as the overall program lead, managing a **global coordination and knowledge platform** to provide information and technical capacity support to participating countries. The platform will also facilitate collaboration among national and global stakeholders to enhance nature-positive infrastructure approaches and innovation.

## MORE INFORMATION

[View](#) full project details.

[Send an expression of interest](#) for joining the knowledge platform.

## CONTACT

**WWF**  
Kate Newman  
Vice President, Sustainable  
Infrastructure  
[kate.newman@wwfus.org](mailto:kate.newman@wwfus.org)

**WWF GEF Agency**  
Rachel Kaplan  
GEF Lead Specialist  
[rachel.kaplan@wwfus.org](mailto:rachel.kaplan@wwfus.org)

**GEF Secretariat**  
Hannah Fairbank  
Asia Regional Coordinator &  
Senior Biodiversity Specialist  
[hfairbank@thegef.org](mailto:hfairbank@thegef.org)

# NATIONAL PROJECTS

## Malaysia



- Integrate biodiversity into port infrastructure planning and development.
- Demonstrate that nature-based solutions (NbS) mitigate risks and enhance biodiversity.
- Leverage greater public and private investments in NbS for resilient infrastructure.

**GEF Agency:** UNEP

**Executing Agencies:** Ministry of Transport, Maritime Institute of Malaysia

## Nepal



- Promote the well-being of the Terai Arc Landscape through conservation, forest and land management, and socioeconomic strategies.
- Develop green transportation design principles that enhance natural capital assessments and awareness of international practices.

**GEF Agency:** ADB

**Executing Agencies:** Ministry of Physical Infrastructure and Transport, Ministry of Forest and Environment

## The Philippines



- Integrate biodiversity and NbS in future transportation investments in the Caraga region of Mindanao through integrated, inclusive planning.
- Mainstream and enhance ecosystem considerations in transportation planning and policy nationwide to deliver nature-positive, low-carbon, and climate-resilient transportation infrastructure projects.

- Leverage large-scale funding facilities for climate-resilient infrastructure to integrate biodiversity and nature.

**GEF Agencies:** ADB, WWF

**Executing Agency:** Department of Public Works and Highways

## Suriname



- Integrate biodiversity into port infrastructure planning and development in the lower part of the Suriname River, including its estuary.
- Promote nature-positive solutions in policies, guidelines, and legislation related to infrastructure planning and design.
- Leverage sustainable financing toward nature-based approaches to increase resiliency.

**GEF Agency:** WWF

**Executing Agency:** Ministry of Spatial Planning and Environment

## Ukraine



- Implement integrated planning and design processes for a major international highway.
- Conduct a detailed ecological analysis to minimize habitat impacts, forest degradation, and species loss.

**GEF Agency:** UNEP

**Executing Agencies:** Ministry for Communities, Territories, and Infrastructure Development of Ukraine; Ministry of Ecology and Natural Resources; WWF-Ukraine

Supported by:



Led by:



In partnership with:

