

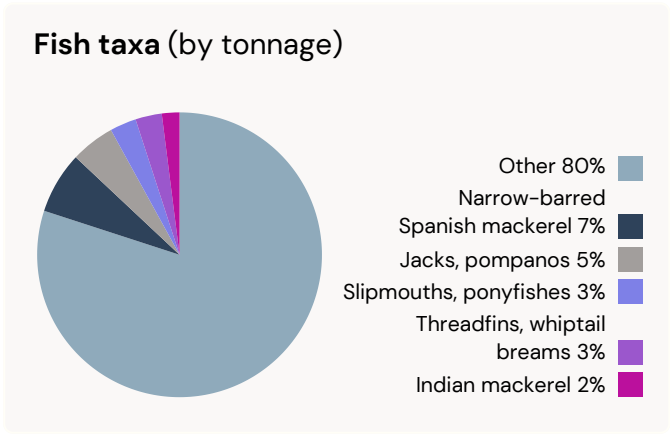
# SOMALIA

Conflicts over marine fisheries will increase as fishing pressure, climate change, and IUU fishing impact stocks. The following summarizes the conditions that contribute to the risk of fisheries conflict in the next five years. Data and analysis are available at [OceansFutures.org](https://OceansFutures.org).

## COUNTRY AT A GLANCE

Population <sup>1</sup>	17,065,581
GDP per capita <sup>2</sup> (USD)	\$438
EEZ SIZE <sup>3</sup> (KM <sup>2</sup> )	831,059
MPAs in EEZ <sup>4</sup> (% of total EEZ)	0%
Disputed <sup>5</sup> EEZ border?	Yes

## COMMERCIAL FISH CATCH COMPOSITION



Source: Sea Around Us

## IUU FISHING

**Compliance with RFMO obligations**  
Higher scores are assigned to countries more frequently reported as being noncompliant with RFMO flag-related obligations.



### Vessels on IUU lists

Number of vessels the country has on lists of IUU vessels maintained by RFMOs.

- ☒ Mandatory vessel tracking for commercial seagoing fleet
- ☒ Have a National Plan of Action on IUU

Source: IUU Fishing Index

**Historical conflict intensity**  
Very high<sup>6</sup>



Source: Uppsala Conflict Data Program

## CATCH TREND

Percent change in fish catch, projected forward five years.

Source: Ocean Health Index



## INTERNATIONAL FISHING VESSELS

### Foreign fishing presence: 2017–2020

Seychelles, Sri Lanka, Kenya, China, Djibouti, Namibia, Iran, Thailand



### Foreign fishing effort

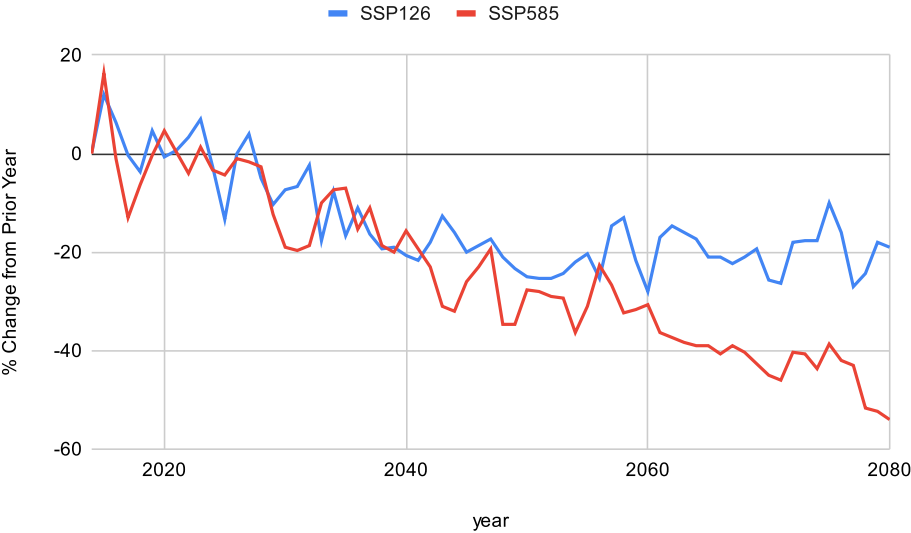
831,058 hours



Source: Global Fishing Watch (percentile is compared to hours of foreign fishing in all EEZs of the world, averaged over 2017-2020)

## PROJECTED CHANGE IN FISH STOCKS

The Dynamic Bioclimate Envelope Model (DBEM) simulates the impact of climate change on exploited fisheries. It simulates changes in fish stock “spatial population dynamics that include population growth, movement and dispersal of adult and larvae, and the the ecophysiological effects of temperature, oxygen and acidity on body size, growth, mortality and reproduction” (Cheung et al., 2013; Tittensor et al. 2021). The model accounts for changes in net primary production (NPP) that will impact fisheries stock abundance and distribution. The model simulates changes based on scenarios from the IPCC’s Shared Socioeconomic Pathways SSP126 (an optimistic sustainability scenario assuming significant reduction in greenhouse gases) and SSP585 (a fossil fueled development scenario assuming minimal reduction in greenhouse gases).



<sup>1</sup>Human population size of the country in 2022. Source: United Nations Population Division

<sup>2</sup>The gross domestic product of a country, per person. Source: International Monetary Fund

<sup>3</sup>The area of a country’s exclusive economic zone (EEZ). EEZ defines the space over which a sovereign state has exclusive rights over its marine resources, including fisheries. Source: Sea Around Us

<sup>4</sup>The percentage of area within an exclusive economic zone containing a marine protected area. Source: World Database on Protected Areas

<sup>5</sup>The presence of a formally disputed international maritime border in an exclusive economic zone. Source: Marine Regions database.

<sup>6</sup>Deaths due to events of organized violence, normalized by population. Source: Uppsala Conflict Data Program.

