

Targeting Natural Resource Corruption

Harnessing knowledge, generating evidence, and supporting innovative policy and practice for more effective anti-corruption programming



This event is made possible by the generous support of the American people through the United States Agency for International Development (USAID). The contents are the responsibility of the Targeting Natural Resource Corruption project and do not necessarily reflect the views of USAID, the United States Government, or individual TNRC consortium members.

TNRC Learning Series

Can strengthening internal controls prevent corruption behind natural resource crimes?



Juhani Grossmann
Basel Institute on Governance



Dr. Rebecca Anne Batts
Basel Institute on Governance



Melinda Gularso
Basel Institute on Governance, Indonesia



Carlos Vargas
Basel Institute on Governance, Peru



Brighton Kumchedwa
Department of National Parks and Wildlife, Malawi



Christopher Jagger
TRAFFIC



Gabriel Sipos
TRAFFIC



Get Engaged

Audio Settings ^



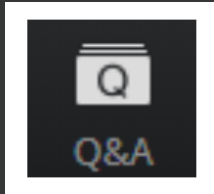
Chat



Raise Hand

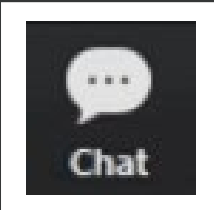


Q&A



1. Pose questions at any time by clicking on the “Q&A” icon

Panelists will reply directly or answer live during the moderated discussion



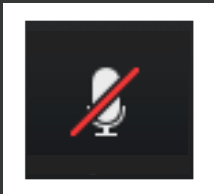
2. Exchange thoughts and introduce yourself in the chat

The chat is visible to all, unless otherwise directed

Join	Join
<p>Connection</p> <p>1. How are you attached to the meeting?</p> <p><input type="radio"/> Windows PC</p> <p><input type="radio"/> Mac PC</p> <p><input checked="" type="radio"/> Android phone/tablet</p> <p><input type="radio"/> iOS phone/tablet</p> <p><input type="radio"/> Other</p> <p>2. How are you attached to the audio?</p> <p><input checked="" type="radio"/> Phone</p> <p><input type="radio"/> VDI/Computer speakers</p> <p>Submit</p>	<p>Host is sharing poll results</p> <p>1. How are you attached to the meeting? (Multiple Choice)</p> <p>Windows PC 67%</p> <p>Mac PC 33%</p> <p>Android phone/tablet 0%</p> <p>iOS phone/tablet 0%</p> <p>Other 0%</p> <p>2. How are you attached to the audio?</p> <p>Phone 0%</p> <p>VDI/Computer speakers 100%</p> <p>Close</p>

3. Respond to polls as they are launched

Please make your selections and remember to click “submit”



4. Note: All participant lines are muted

Given high attendance in this webinar, all audience lines will remain muted

Get Engaged

Audio Settings ^



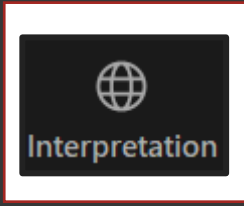
Chat



Raise Hand



Q&A



5. Select your preferred language by clicking on the "interpretation" icon

POLL

What is an internal control system?

- a. A tool to track down those who don't follow the agency's official position
- b. A mechanism that allows agencies to achieve their objectives
- c. A building's plumbing and wiring sensor dashboard
- d. An inner-agency anti-corruption investigation team

Can strengthening internal controls prevent corruption behind natural resource crimes?



Juhani Grossmann
*Green Corruption Programme,
Basel Institute on Governance*



Can strengthening internal controls prevent corruption behind natural resource crimes?



Dr. Rebecca Anne Batts
*Lead Researcher, Internal Controls,
Basel Institute on Governance*



Can strengthening internal controls prevent corruption behind natural resource crimes?



Brighton Kumchedwa
*Director,
Department of National Parks and
Wildlife, Malawi*



Can strengthening internal controls prevent corruption behind natural resource crimes?



Melinda Gularso
Researcher,
Basel Institute on Governance, Indonesia

Internal Controls for Corruption Prevention

Initial findings and recommendations for NRM Agencies

Green Corruption Program | December 2022

Overall findings and notable trends

Based on our existing studies, limitations on internal controls policies are related to the following aspects:

1

Policies may be incomplete, too broad and/or outdated, which may increase the “grey areas” of corrupt practices

2

Policies may create unintended chilling effects that lead wildlife personnel to (1) deprioritize wildlife issues and (2) defer themselves to stand up against corrupt practices

3

Policy implementation gap remains significant, mainly due to a lack of resources and limited awareness of issues

Differences

Variations are apparent across countries of focus, respective to their own control environments...



Strong leadership may play a significant role in a complex inter-governmental structure within the wildlife and conservation areas



Training and capacity building may not always be the answers, if not supported by comprehensive integrity monitoring and evaluation mechanisms



Lack of resources may also have effects on the personnel systems (i.e. choice to "outsource" personnel), not only on program implementation

Recommendations

Detailed recommendations are prepared for each institutions, which usually falls on these following areas...

- **Review and development of a more-detailed policies** that provide a more concrete guidance for employees in carry out their works
- **Enhancing awareness of control policies** through increasing dissemination and popularization of policies
- **Enacting collaboration across units and expanding the monitoring ability of existing integrity units** to limit the implementation gaps

Thank you

Can strengthening internal controls prevent corruption behind natural resource crimes?



Christopher Jagger

*Senior Manager - Global Law Enforcement
Support (Lead),
TRAFFIC*

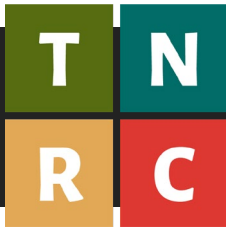


Gabriel Sipos

*Anti-Corruption Coordinator,
TRAFFIC*

Corruption

The dark side of conservation



Overview

Outcomes and Key Messages

Part 1: Context

Part 2: Case-Studies

Part 3: Simulation

Part 4: Way Forward

T

N

R

C

A microscopic view of a honeycomb structure, showing a dense array of small, circular cells. The cells are arranged in a regular, repeating pattern, with some cells appearing slightly larger or more prominent than others. The overall appearance is that of a complex, interconnected network of cells, typical of biological or material science structures.

Corruption Internal & External

1. Decrease internal corruption risks in TRAFFIC's work
 2. Increase TRAFFIC's ability to include anti-corruption aspects into its conservation projects externally
-

T

N

R

C

A microscopic view of a honeycomb structure, showing a dense array of hexagonal cells. The cells are filled with a dark, granular substance, possibly pollen or a similar biological material. The overall appearance is a complex, repeating pattern of small, interconnected units.

Corruption Internal & External

1. Decrease internal corruption risks in TRAFFIC's work
 2. Increase TRAFFIC's ability to include anti-corruption aspects into its conservation projects externally
-

Criminal Masterplan

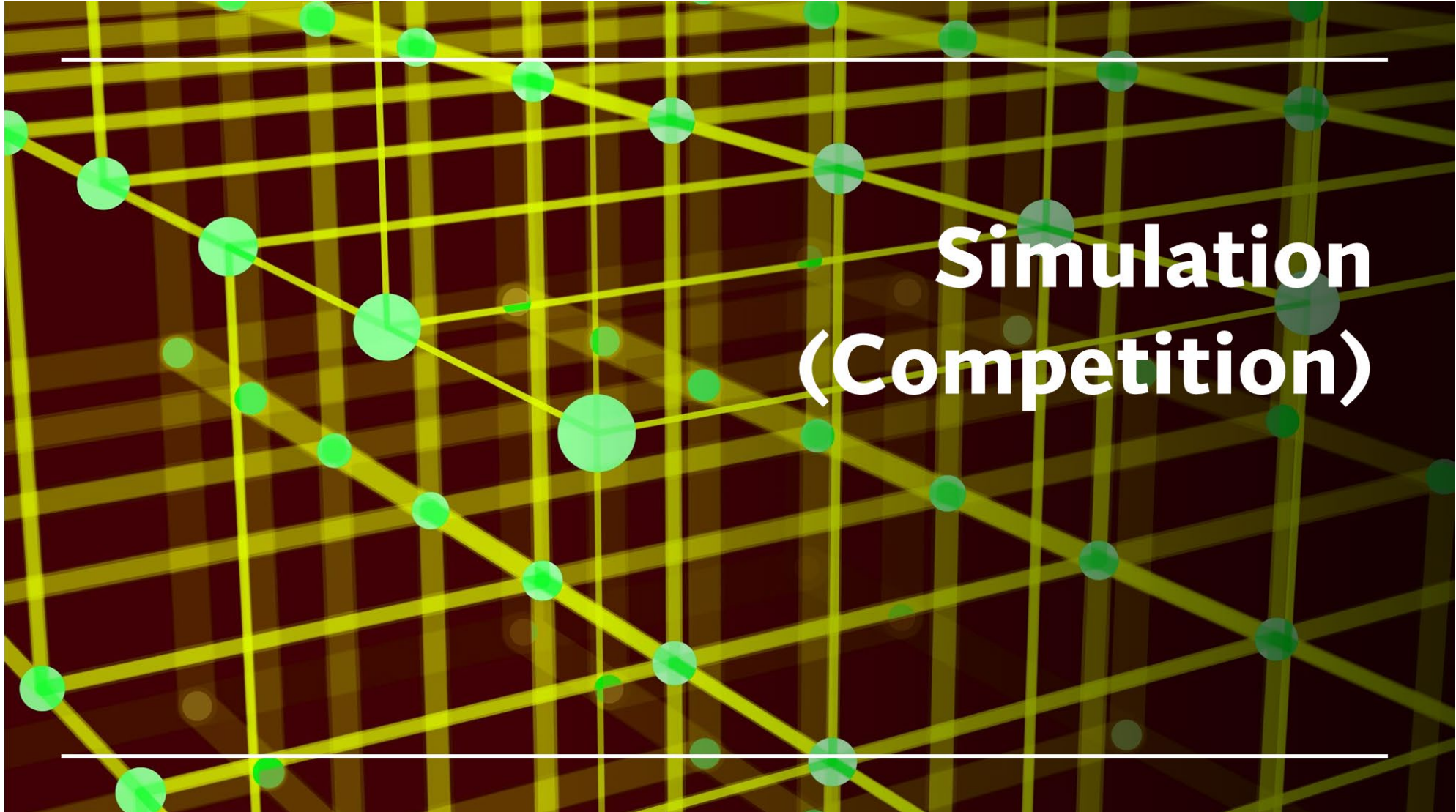
Rules

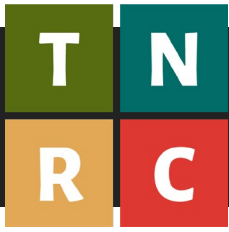
1. Work in pairs (or threes)
2. You're competing
3. Pick a 'victim'
4. Assume real world status
5. 5 minutes



Most 'evil & effective' plan wins

Corrupt us





Project Timeline



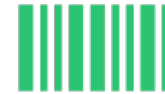
Project
Proposal



Project
Planning



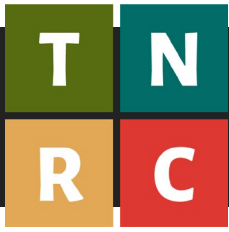
Project
Management



Implementation

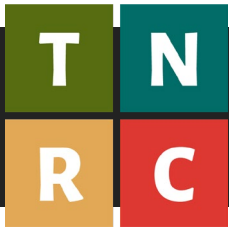


Future



Final Output

- Competing presentations (no longer than 10 mins each)
- Team A presents, Team B challenges – vice versa
- Best team wins!



Outcomes

- Broad understanding of corruption, and awareness of different strategies and tools to combat it
- Improve understanding of key risks driving corruption
- How to recognize corruption behaviour around us (inside and outside of organization)
- How to act in the face of corruption
- So what to TRAFFIC policy and procedures?
- So what to TRAFFIC working practices and culture?

Can strengthening internal controls prevent corruption behind natural resource crimes?



Carlos Vargas

*Head of Public Financial Management program,
Basel Institute on Governance, Peru*

Can strengthening internal controls prevent corruption behind natural resource crimes?



Juhani Grossmann
**Basel Institute on
Governance**



Dr. Rebecca Anne
Batts
**Basel Institute on
Governance**



Melinda Gularso
**Basel Institute on
Governance,
Indonesia**



Carlos Vargas
**Basel Institute on
Governance, Peru**



Brighton
Kumchedwa
**Department of
National Parks and
Wildlife, Malawi**



Christopher Jagger
TRAFFIC



Gabriel Sipos
TRAFFIC

POLL

After attending this webinar, would you say that you have:

- A better understanding of what an internal control assessment is and how it can be useful?
- A better understanding of how internal controls are used in natural resource management (NRM) currently?
- A better understanding of the risks and challenges in conducting internal control assessments?

Targeting Natural Resource Corruption

Harnessing knowledge, generating evidence, and supporting innovative policy and practice for more effective anti-corruption programming