



WWF INSIDER JOURNEYS

GALÁPAGOS: THE ENCHANTED ISLES



TRIP ITINERARY

A WWF Sailing Voyage to the Galápagos Islands
With Wendy Goyert, WWF Eastern Pacific Seascape Director

July 29–August 7, 2026

Six hundred miles off the coast of Ecuador lie the volcanic Galápagos Islands, named for the giant tortoises that are among its most noted inhabitants. This archipelago is “a little world within itself” where blue-footed boobies, marine iguanas, and Galápagos penguins all shuffle beside us, unconcerned by human presence. Almost synonymous with Darwin, these islands are a symbol not only of change (evolution), but also of wildlife conservation.

Join WWF Experts for an insider exploration of these enchanted islands while aboard the luxurious M/C Natural Habitat Petrel. We sail throughout the



island chain, docking for relaxing beach walks, snorkeling opportunities, panga rides, and hikes with wildlife viewings at every turn. We will also visit the Charles Darwin Research Station, established by WWF in 1962 as one of WWF’s earliest priority places, and have the chance to spend the night at a private giant tortoise camp for extra time with these ancient animals. The island that was once home only to wildlife now welcomes 160,000 tourists annually and houses 30,000 people. For over 10 years, WWF worked to develop an effective waste management system on the islands and campaigned to educate inhabitants about recycling. WWF also helped establish the surrounding marine reserve encompassing 50,000 square miles which helps protect marine wildlife like sea lions, sharks, sea turtles, and tropical fish.



ITINERARY AT A GLANCE 10 Days

	Date	Location	Accommodation
1	July 29	Quito, Ecuador	Patio Andaluz
2	July 30	Exploring Historic Quito	Patio Andaluz
3	July 31	Quito, San Cristobal, Galapagos Islands—Board	M/C Nat Hab Petrel
4	August 1	Española—Gardner Bay / Punta Suarez	M/C Nat Hab Petrel
5	August 2	Floreana—Punta Cormorant / Devil’s Crown / Post Office Bay	M/C Nat Hab Petrel
6	August 3	Santa Cruz—Tortoise Breeding Center	Natural Habitat’s Private Tortoise Camp
7	August 4	Santa Cruz / Bartolome—Pinnacle Rock	M/C Nat Hab Petrel
8	August 5	Genovesa—Darwin Bay / Prince Philip’s Steps	M/C Nat Hab Petrel
9	August 6	Santiago—Puerto Egas / Buccaneer Cove	M/C Nat Hab Petrel
10	August 7	Santa Cruz—Black Turtle Cove / Disembark / Quito / Depart	

ITINERARY IN DETAIL

Day 1, July 29: Quito, Ecuador

Upon arrival at the airport in Quito, you are met by our local guide and transferred to the city's historic center, about an hour away. Settle into our boutique hotel in the heart of the colonial quarter, and enjoy dinner on your own this evening.

Overnight Patio Andaluz

Day 2, July 30: Exploring Historic Quito

After breakfast, embark on a full day of discovery in Ecuador's capital. Heralded as Latin America's best-preserved colonial city, Quito's Old Town is a UNESCO World Heritage Site filled with cobblestone lanes, elegant plazas and monuments, and ornate gilded churches. On a guided city tour, take in a panorama of the city and surrounding volcanic peaks from Panecillo Hill, visit the 16th-century Church and Convent of San Francisco, and wander through San Francisco Square. Marvel at the baroque splendor of La Compañía Church with its gleaming gold-leaf interior, and survey Independence Plaza, the original center of Quito from which we view the Archbishop's Palace, Cathedral and Presidential Palace.

We also visit an artisanal chocolate shop featuring products handmade from Ecuador's finest cacao and we'll do a chocolate tasting. Ethically cultivated by a women's cooperative using traditional organic techniques, this rare cacao is prized by the great chocolatiers of the world for its heady aroma and unique flavor. Following lunch, the afternoon is at leisure to explore the city further on your own or visit the shops near our hotel, where you can purchase locally crafted goods ranging from hats to wooden toys. This evening join one of your Expedition Leaders, WWF hosts, and fellow travelers for a welcome dinner.

Overnight Patio Andaluz (B,L,D)

Day 3, July 31: Quito / San Cristobal, Galapagos Islands—Board *M/C Natural Habitat Petrel*

Depart early this morning for the Quito airport and our flight, which has a short layover in Guayaquil due to scheduling and logistical constraints, to the



Galapagos Islands, landing at San Cristobal. Here, we meet our second Expedition Leader who accompanies us to the pier for the start of our Galapagos cruise aboard the stylish luxury catamaran, the Natural Habitat Petrel. After settling into our cabins, join our guides for an orientation and safety briefing. After lunch aboard, we set off for a hike to the top of Frigatebird Hill where we're rewarded with spectacular views of the coast, Kicker Rock, and the town of Puerto Baquerizo Moreno. Seabirds soar overhead, and we're likely to see frigatebirds with their distinctive red chests. Back on board the Natural Habitat Petrel, sit down to enjoy dinner as we cruise off into the sunset.

Overnight M/C Nat Hab Petrel (B,L,D)



Day 4, August 1: Española—Gardner Bay / Punta Suarez

Our first port of call is the island of Española, one of the most prolific wildlife sites in the Galapagos. In the morning, we visit an excellent snorkeling site off Gardner Islet with a colorful diversity of sealife and caves to explore by panga. Later, we land at Gardner Bay, with its long stretch of white sandy beach usually half-covered by a large colony of sea lions. Swim with them right from the beach, or relax on the powdery sand



where curious mockingbirds sometimes peck at our sandals. Cruising around to the other side of the island, we step ashore at Punta Suarez, where we find the greatest number of endemic species in Galapagos. From April to December, the huge waved albatross, found only on Española, performs its raucous mating ritual. Colonies of blue-footed boobies show off for potential mates while red-billed tropicbirds take shelter on the cliff walls. We also find Darwin's finches, Galapagos doves, Galapagos hawks, and a unique subspecies of red and

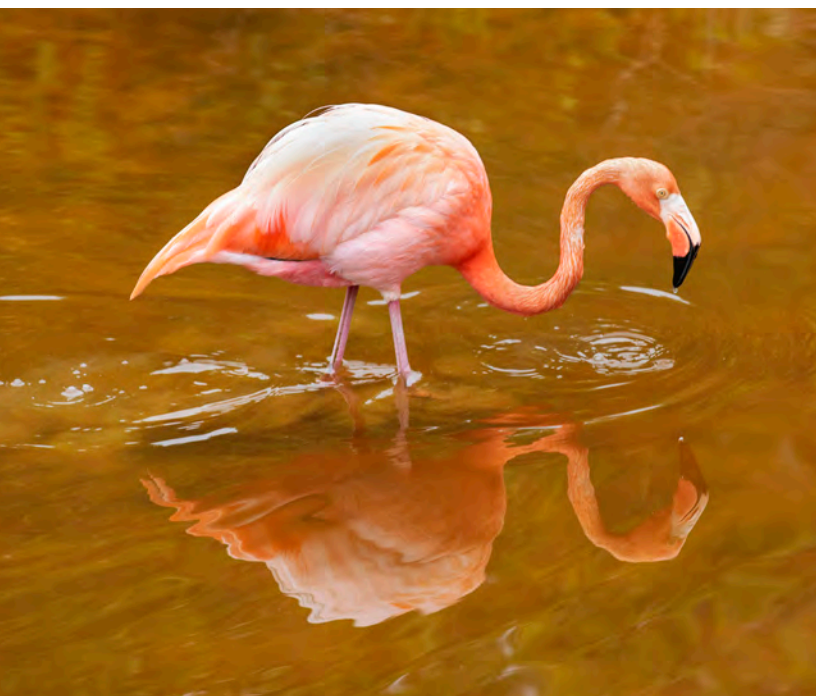
green marine iguana endemic to this island.
Overnight M/C Nat Hab Petrel (B,L,D)

Day 5, August 2: Floreana—Punta Cormorant / Devil's Crown / Post Office Bay

This morning we land at Punta Cormorant on Floreana, one of the few populated islands in the Galapagos. Following a trail through a Palo Santo forest to a brackish lagoon, we find pintail ducks, common stilts and bright pink flamingos. As we wind our way past a rich variety of plants, we reach a beach of fine sand where sea turtles lay eggs in the dunes, and rays swim in the shallow water. Later, we snorkel at Devil's Crown, an eroded volcanic cone that is a roosting site for boobies, pelicans and frigate-birds. Here, we drift-snorkel with the current above the sunken craters colonized by a brilliant array of corals and colorful fish. Rays, sea turtles and reef sharks are also frequent visitors.

Floreana's rich human history is filled with intrigue, including tales of pirates who once hid out here. At Post Office Bay, we learn about a relic of this colorful past, the "Post Office Barrel." Established by British whalers in 1793, it's still a means for travelers to leave mail for personal delivery via visitors passing through. Here at the bay, we can snorkel right from the beach in search of sea turtles, paddle a kayak or take a panga ride to look for turtles and sea lions, and enjoy a walk through a prickly pear forest.

Overnight M/C Nat Hab Petrel (B,L,D)



Day 6, August 3: Santa Cruz—Tortoise Breeding Center / Nat Hab's Private Tortoise Camp

Land at Santa Cruz this morning where our day begins in Puerto Ayora, the island's main town where WWF, in conjunction with the Ecuadorian Government, helped established the island's waste management and recycling center. Here, we visit the Fausto Llerena Breeding Center, the world-famous tortoise-rearing center managed in a partnership between Galapagos National Park and the Charles Darwin Research

Station. Learn about efforts by international scientists, guides, rangers and park managers to research and conserve the unique habitats and species of the UNESCO World Heritage Site that is the Galapagos. At the tortoise-rearing facility, view the protection pens where tiny hatchlings are bred to increase the depleted tortoise population, a central focus of the station's conservation mission. To date, more than 5,000 tortoises bred at the center have been released into the wild.

After time to explore the town, followed by lunch back on board, we disembark to ascend by van into the misty highlands of Santa Cruz, arriving at Nat Hab's private Tortoise Camp. This exclusive setting offers a rare opportunity to spend a night in wild tortoise habitat, and these ancient, gentle reptiles that are the archipelago's namesake often wander right through camp. Accommodations are in safari-style raised platform tents and treehouses with views of the ocean. While rustic, they offer comfortable amenities, including real beds and private en suite facilities.

But the real treat of a stay here is our proximity to wild tortoises, which are attracted to the area's lush vegetation, including our Scalesia forest restoration zone. Since 2022, Nat Hab



and our guests have planted more than 1,000 of this important tree, endemic to the islands and habitat for myriad diverse plants and animals. However, invasive species and historical deforestation threatens the Scalesia forests, making their conservation a high priority. Tortoises are most commonly seen in camp from July through February. From March to June, we make an excursion to a nearby tortoise reserve for closer views, as they migrate seasonally to a lower elevation.

Please note: At times, Tortoise Camp may be closed due to poor weather conditions.

Overnight Nat Hab's Private Tortoise Camp (B,L,D)



Day 7, August 4: Santa Cruz / Bartolome— Pinnacle Rock

We continue our exploration of Santa Cruz this morning, in search of more giant tortoises. During the season when they are rare in camp, we visit a tortoise reserve in the highlands to spend more time with these amiable reptiles. This afternoon, we return to the Petrel and sail on to tiny Bartolome, where we snorkel with penguins around the base of Pinnacle Rock. Gentle white-tipped reef sharks, sea turtles and stingrays are also common sightings. A climb to the island's highest point offers 360-degree views as we pass intriguing geological formations such as spatter cones, tuff cones and lava tubes along the way. From the summit, a panorama unfolds of the surrounding islands and Pinnacle Rock, famously shown in the 2003 film *Master and Commander*. Those who prefer not to hike can take a panga ride along the shoreline, watching for rays and reef sharks just below the surface.

Overnight M/C Nat Hab Petrel (B,L,D)



Day 8, August 5: Genovesa—Darwin Bay / Prince Philip's Steps

Genovesa Island, also called Tower, is a collapsed shield volcano whose flooded caldera attracts vast numbers of pelagic seabirds that gather here to breed and nest. Inside the submerged crater thousands of great frigatebirds, red-footed boobies, swallow-tailed gulls, Galapagos storm petrels and yellow-crowned night herons create a cacophony of squawks. We anchor at Darwin Bay, formed thousands of years ago after the collapse

of the volcano's roof. Surrounded by vertical cliffs, the bay is an ideal breeding site for the more than 1 million birds that congregate on Genovesa. This morning, we have opportunities to kayak and snorkel in Darwin Bay before moving on to our second landing at El Barranco, also known as Prince Philip's Steps. This steep path with stairs carved into the rock leads to a plateau full of birdlife within a Palo Santo forest. Walk among colonies of great frigatebirds and Nazca boobies to a lava field



where storm petrels nest in underground lava tubes. We may also see Galapagos doves, mockingbirds and perhaps an endemic short-eared owl.

Overnight M/C Nat Hab Petrel (B,L,D)

Day 9, August 6: Santiago—Puerto Egas / Buccaneer Cove

At Puerto Egas on Santiago, we make an early-morning landing on a black sand beach with eroded rock formations. Following a trail across the dry interior, observe the remains of a salt mining enterprise before continuing along the coast. Birdlife abounds, with great blue herons, lava herons, oystercatchers, yellow-crowned night herons and seasonal shorebirds on display. In the lava grottos we find a colony of Galapagos fur seals, one of the only places in the Galapagos where we see these endemic animals from land. Afterward, there's time to swim or snorkel from the beach with the resident sea lions. Snorkeling at Buccaneer Cove, which was once a refuge for British pirates, offers a glimpse of underwater rock formations, sea turtles, rays and reef sharks



Overnight M/C Nat Hab Petrel (B,L,D)

Day 10, August 7: Santa Cruz—Black Turtle Cove / Disembark / Quito / Depart

Returning to Santa Cruz this morning, we visit Black Turtle Cove, a sheltered lagoon on the north coast of the island. Take a panga ride to explore the shimmering turquoise water, hoping to see white-tipped reef sharks, rays and sea turtles. As we say farewell to the *Natural Habitat Petrel's* captain and crew, it's time to transfer to the airport for our flight back to the mainland. Upon arrival at the Quito airport, we transfer to our nearby hotel, just minutes away, where an overnight stay is included. A complimentary shuttle will return you to the airport for your homeward flight.

(B)

Please note: The itinerary provided is meant as a guideline and is subject to change without notice. On rare occasions, it may be necessary to deviate from our regular itinerary for reasons beyond our control. In these instances, we will provide the best available alternative.

Meet Our Expert



Wendy Goyert, WWF Eastern Pacific Seascape Director

Wendy leads WWF-US's seascapes work in the Eastern Pacific. Since 2011, Wendy has worked closely with WWF staff and partners in Latin America and the Caribbean to develop, implement, and monitor fishery improvement projects (FIPs) to ensure fisheries are transitioning towards sustainability. She has also led WWF training efforts to build global capacity for FIP development and implementation. She is now expanding upon her fisheries experience in Latin America to develop

an integrated nature-positive seascape approach to achieve positive change for biodiversity, people, and climate in Ecuador by 2030.

Wendy fell in love with the ocean growing up fishing, sailing, and swimming in the waters off Martha's Vineyard, Massachusetts, and still spends much of her summers there with her kids. She developed a love for Latin America at a young age while living with her family in Argentina, Brazil, and Mexico for eight years. She feels very fortunate that she found a career where she can pursue her love of marine conservation in one of her favorite parts of the world.

What to Expect and Physical Requirements

This trip requires a moderate level of activity. Our Galápagos adventures feature a full agenda each day, with early mornings and long days filled with various activities. Activities primarily include island walks, swimming, and snorkeling. Trails are often rough and uneven, crossing sharp lava fields and loose rocks and gravel. Walking over slippery rocks is sometimes necessary when stepping ashore. Passengers must be able to walk a minimum of two miles to participate in this trip, walk up and down stairs, and be able to get in and out of motorized pangas (rigid inflatable rafts), which can be very unsteady in rough water. A few wet landings, where we disembark from the panga directly into the water and walk up onto the beach, are required. Itineraries that feature a visit to Bartolome include a walk with more than 300 wooden steps to reach the viewpoint at the top of the island and itineraries that visit Española include a 2-mile hike on a trail made of primarily lava and rock. Snorkeling is a big component of this trip, with excursions offered nearly every day, sometimes twice a day. While no snorkeling experience is required, prior practice is recommended, and travelers should be comfortable swimming in moderate currents and in deep water where you can see the bottom but cannot stand up. Our Expedition Leaders will also offer instruction for those in need of additional snorkeling guidance. Travelers are not required to participate in every activity.

Elevation in Quito: Please note that on most departures, our first two nights are spent in Quito at an elevation of 9,300 feet. The relative lack of oxygen at this elevation may manifest in altitude-sickness symptoms that can include headaches, dizziness, tiredness, and nausea during the first few hours or days spent at elevation. Hydration and rest usually help symptoms to resolve, though participants may wish to talk with their doctor about taking along a prescription for a medication such as Diamox to better manage potential physical reactions to high altitude.

April is one of the best months to visit the Galápagos. It is near the end of warm and wet season, but rains will begin to end. Warmer water and calmer seas allowed more comfortable and less choppy cruising. In April, flowers will begin to blossom, making for some colorful landscapes on the islands. Wildlife is abundant as land iguanas and sea turtles are hatching. Temperatures range from average highs of 86°F during the day to average lows of 72°F at night. Quito is cooler in April with average temperatures ranging from 66°F to 49°F.



Accommodations



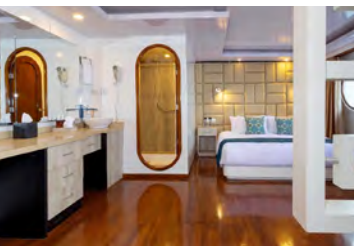
Patio Andaluz

Located in the heart of Quito Antiguo, the city's beautifully preserved colonial Old Town, this boutique hotel—occupying an original 16th-century home—radiates historic charm.



M/C Natural Habitat Petrel

The luxurious 115-foot Natural Habitat Petrel is named after a seabird common to the Galapagos. Like its namesake, Natural Habitat Petrel is elegant and swift. This motorized catamaran is designed for comfort and stability while conveying guests in style between the islands of the Galapagos. Eight large staterooms, including two suites, accommodate up to 16 guests. Cabins have varied configurations with either two full beds that can convert to one king bed. Each has a private balcony, ample closet storage, en suite bathroom. An additional ninth cabin offers cozy single accommodations. Interior decor is as clean and contemporary as the ship's exterior profile, featuring a palette of black and white accented with scarlet and gold. Chrome, leather and glossy teak floors accentuate the modern design. An open top deck offers 360-degree views, while a spacious lounge provides room to relax in the air-conditioned interior. Enjoy fine meals in the dining room or on the aft deck. Two bars offer outdoor refreshments, while a Jacuzzi and library round out the ship's shared spaces.



Cabin Descriptions

- Cabins 1 and 2 are located on the main deck closest to the dining room. The beds are twin-sized but can be converted to a single king. The cabins are approximately 323 sq. ft.
- Cabins 3 and 4 are larger suites located on the main deck. The beds are king-sized. There is a chair in the room which can be converted into a small sofa bed for triples. The sofa bed is recommended for children. The cabins are approximately 463 sq. ft.
- Cabins 5 through 8 are located on the upper deck. The beds are twin-sized but can be converted to a single king. The cabins are approximately 323 sq. ft.
- Cabin 9 is located on the upper deck. It has one twin bed and is approximately 151 sq. ft.

Natural Habitat's Tortoise Camp

Exclusively for Nat Hab guests! Perched high on a hillside overlooking the Pacific Ocean, our deluxe camp features elevated safari-style tents and treehouses set amid native habitat for wild tortoises.



About WWF Insider Journeys

This trip is an invitation-only conservation travel program for our closest supporters, along with friends and family, to see firsthand the positive impact World Wildlife Fund is making. These custom-designed journeys are led by WWF experts and offer exclusive opportunities to discover the wildlife and ecosystems we protect; meet community members whose lives are being improved because of our work, and immerse yourself in the worlds of our field staff and partners on the ground. Come explore the best of the natural world and see how together we are making a difference for our planet.

About Our Travel Partner



This journey is being arranged by Natural Habitat Adventures of Boulder, Colorado. For more than a decade, WWF has partnered with Nat Hab to take travelers to view nature's greatest sights. WWF selected Natural Habitat as its partner because of its long-standing commitment to conservation and the exceptional quality of its adventures.

Reservation Information & Trip Details

For reservations and additional information, please contact Court Whelan at Natural Habitat Adventures at 888-993-8687, (Int'l) 303-449-3711 or courtwh@nathab.com.

DATES: July 29–August 7, 2026

GROUP SIZE: Limited to 14 guests

LAND COST: Category 1: \$11995 (+internal air/park fee)
Category 2: \$12995 (+internal air/park fee)
Category 1 Solo: \$13995 (+internal air/park fee)

INTERNAL AIR COST: \$597 per person for adults and \$447 per person for children 11 years old and younger (this will be listed separately on our invoicing).*

Single Supplement: For single room add 50% to the trip price.

DEPOSIT: \$500 per person (nonrefundable)

INCLUDED: Trip price includes: Accommodations including the M/C Petrel, Nat Hab's deluxe private Tortoise Camp and hotel on the mainland, services of Nat Hab's professional Expedition Leaders, travel costs for your WWF Expert, all meals from breakfast on Day 2 through breakfast on final day, local beer and house wine with dinner aboard the M/C Petrel, snorkeling gear and wetsuit, most gratuities, airport transfers on Day 1 and final day, all activities and entrance fees, all taxes and service fees.

Internal air cost includes: Round-trip flights between Quito and the Galápagos (this will be listed separately on our invoicing).

NOT INCLUDED: Travel to and from the start and end point of your trip, alcoholic beverages, some gratuities, passport and visa fees (if any), optional activities, items of a personal nature (phone calls, laundry and internet, etc.), airline baggage fees, airport and departure taxes (if any), required medical evacuation insurance, optional travel protection insurance.

PAYMENTS: A nonrefundable deposit of \$500 confirms your space. Payments are accepted by credit card or by check made out to Natural Habitat.

CANCELLATIONS & REFUNDS: Cancellations must be received in writing at Natural Habitat Adventures by US mail, email or fax. At the time Natural Habitat Adventures receives your written cancellation, the following per person penalties apply: On or before 120 days before the trip: Full refund minus \$500 deposit. On or before 60 days before the trip: Forfeit 50% of tour cost. After 60 days before the trip: No refund.

INSURANCE: Since the areas we travel to on this trip are remote and wild (that's why we go there!), we require medical evacuation insurance for our guests' safety. If you decline the medical evacuation insurance coverage offered by Natural Habitat Adventures, we request that you send us documentation of the independent coverage you have selected. We will add the cost of a medical evacuation policy to your tour invoice until you provide our office with proof of coverage including your insurance company's name, contact number and your individual policy number. Thank you for understanding that our policy exists exclusively in the interest of our guests' safety.

To protect your investment and to provide peace of mind while you travel, we also strongly recommend purchasing comprehensive travel insurance. Plans may cover everything from medical treatment to trip cancellations and delays and lost luggage. Please contact our office if you would like more information about the medical evacuation and comprehensive travel insurance policies we offer by calling 800-543-8917.

GETTING THERE & GETTING HOME:

Arrival: Arrive in Quito any time on Day 1.

Departure: You are free to depart from Quito after 9 pm on the final day.

We can best serve you if our Natural Habitat Adventures Travel Desk makes your reservations, as our staff is intimately familiar with the special requirements of this program and can arrange the most efficient travel. Please call us at 800-543-8917. Note that while we offer you the best possible rates available to us on airfare and additional nights' accommodations, you may find better fares online.

While adventures are designed specifically for WWF's closest supporters and enhanced with WWF Experts, exclusive site visits, and enriched content, a minimum number of guests is required to run each trip. To avoid canceling, WWF and Nat Hab may fill unsold spots with WWF and non-WWF members.